

## What is CLD?

- An affordable non-resident Leadership Development Program that fulfills all requirements for certification as a church leader within the WPA District
- Built upon the curriculum of The Alliance Center for Leadership Development
- Equips students with a sound theological foundation and practical ministry skills
- 3 year schedule at a total cost of \$3,200
- Designed to prepare men and women for ministry leadership within the local church

## Why CLD?

- Fulfills the theological education requirements for licensing as a C&MA pastor
- A very affordable Alliance alternative to full-time Bible College or Seminary.
- Convenient online classes tailored for working adults.
- Suitable for anyone seeking a more significant role in (lay) church leadership.

## Who should consider?

Men and women who are:

- Sensing God's calling in a new season of life
- Seeking God's direction concerning vocational ministry
- Looking for Biblical and practical training to fulfill their calling
- Being challenged to play a more significant volunteer role in church leadership

## Next Steps

Go to [cmawpa.org/cld](http://cmawpa.org/cld) to learn more and begin the application process.

## Connect

with the Interim Director of the WPA CLD






Rev. Lee Thompson  
410-979-9902  
[Skypilot4808@outlook.com](mailto:Skypilot4808@outlook.com)

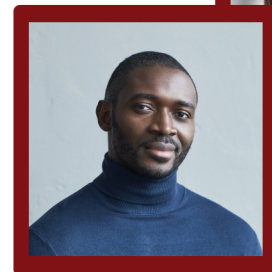


**WESTERN PENNSYLVANIA DISTRICT**  
341 N Chestnut St • Punxsutawney, PA 15767

Phone: 814-938-6920  
Fax: 814-938-7528  
[cmawpa.org](http://cmawpa.org)

Connect with us

-  [facebook.com/cmawpa](https://facebook.com/cmawpa)
-  [instagram.com/cmawpa](https://instagram.com/cmawpa)
-  [vimeo.com/cmawpa](https://vimeo.com/cmawpa)



# CLD

Center for  
LEADERSHIP  
DEVELOPMENT



**WESTERN PENNSYLVANIA DISTRICT**  
OF THE CHRISTIAN AND MISSIONARY ALLIANCE

# Components of Center for Leadership Development

## EDUCATION

in partnership with  
**CMALLIANCEU**<sup>™</sup>

### Core Requirements

**CMALLIANCEU**<sup>™</sup> (cmallianceu.org) is the official Christian and Missionary Alliance (CMA) educational resource center for online education. Regardless of your current educational status, there is a core subject matter education requirement for individuals interested in pursuing CMA leadership positions. This core requirement is completion of a 30-credit equivalency program designed to prepare men and women for ministry leadership within the local church. These credits are validated through Crown College and accepted toward any of their degree programs.

### Features

- On-line Instruction by College faculty
- 10-14 hours/week
- 3 year completion schedule
- Program Cost: \$3,200.00
- Local evaluators/mentors/facilitators
- Accredited

## IMMERSION

in partnership with  
greenhouseENVIRONMENTS

### How it Works

greenhouseENVIRONMENTS is a three (3) year structured environment provided by local congregations identified as exhibiting characteristics that create an ideal setting for future church leaders to fully immerse themselves in pursuit of Spiritual Maturity and Skill Mastery for greater Kingdom impact. It is carefully mentored environment designed to help students to recognize their personal strengths and challenges with respect to how they might impact effectiveness Kingdom impact.

Students accepted into IMMERSION will be issued licensure as "Apprentice" with the CMA, with all privileges and responsibilities so attached. Completion of IMMERSION qualifies students to pursue further credentialing with the C&MA in pursuit of filling officially recognized leadership positions.

## CERTIFICATION

### Accreditation Interview

You are ready for your official accreditation interview! The 2-3 hour interview will focus on discovering, celebrating, affirming, and challenging you in the core characteristics of an Alliance worker: Kingdom-Minded, Biblically Grounded, Spirit Dependent, Competently Skilled, Self-Aware and Self-Disciplined. The interview will include 3-4 pastors, district members or National Office Staff who will confirm and recommend the next steps in your leadership development.



For more information go to [CMAWPA.ORG/CLD](http://CMAWPA.ORG/CLD).